

OMFURN SYSTEM DOORS



DOORS WITH SUPERLATIVE QUALITY,
AESTHETICS AND UNMATCHED DURABILITY





Manufacturing unit at Umbergaon, Gujarat.

OMFURN SYSTEM DOORS

OMFURN, a coveted name in modular furniture, was established in 1997. After grooming offices, homes and premium hotel rooms with its exceptional furniture lineage, it has diversified into the manufacture of System Doors.

These high-quality System Doors are the result of a modern manufacturing facility spread over 15,000 sq. mtr. plot at Umbergaon, Gujarat.

- Latest technology wood working CNC machines from Germany, Italy and Austria.
- Dust-free coating line from Venjakob, Germany and Cefla, Italy.
- The door frames are crafted with Steam Beech, Red Meranti, Teak, Basra & Engineered Wood.
- Woods are seasoned in automatic seasoning plant to derive minimal moisture content.
- Complete factory finished doors and door frames ensure better quality and durability.
- OMFURN provides both Fire Rated and Non-Fire Rated System Doors.
- Our manufacturing unit can produce 7000 door sets per month.

PREFINISHED PRECISION DOORS TO YOUR DIMENSIONS AND SATISFACTION

PROCESS PHOTOGRAPHS



LAMINATED DOORS

OMFURN Laminated Doors are coveted for their innovative designs, contemporary and classic colours, graceful finish and durability. Stringent manufacturing processes allow them to withstand diverse climatic conditions, make them water-proof and suitable for any location.

OM Lam 1



OM Lam 2



OM Lam 3



OM Lam 4



OM Lam 5



OM Lam 6



VENEER DOORS

Omfun is a leading manufacturer and supplier of wide range of Veneer Doors. Veneer Door range comprises of best quality natural veneers backed by cutting-edge infrastructure, fine craftsmanship and superior finish.

OMV 1



OMV 2



OMV 3



OMV 4



OMV 5



OMV 6



PU PAINTED DOORS

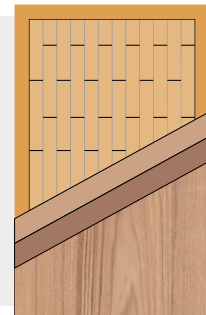
Omfurn Polyurethane Painted Doors are clear winners for interior doors because of their user-friendly attributes. Omfurn provides wide range of colour finishes as per the requirement of the customers.



Door Shutters

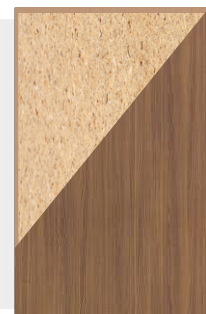
Solid Pine Infill Core

Omfurn Provides Flush Doors with solid core in pine infill shutter having 5 layers and bonded with phenol formaldehyde for water resistant. All shutters are sanded on our wide belt sander before pressing laminates for perfect straightness and smooth finish.



Solid Chipboard Core

Omfurn provides 3-layer high density Chipboard core shutter imported from Germany having density of 600kg/m³. Our Shutters are confirming to IS 2202 (Part 1) and is tested as per IS 4020.



FIRE RESISTANT DOOR

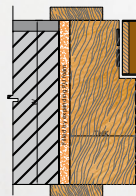
- Fire door is a type of door or closure used as a passive fire protection system within building to prevent the spread of fire.
- It is usually the only means of allowing people to pass through and/or to escape.
- Fire doors are part of a building's passive fire protection system; an essential requirement for all public buildings, offices, factories and residences.
- Our Fire rated doors are certified at Indian Plywood Industries Research & Training Institute (IPIRTI), Bangalore.
- The architect ascertains the requirement of the building users and decide where and in what form the doors will be required.
- Intumescent strips are rebated onto all 3 sides of the door frame which expand to seal the gap between the door and frame to prevent the spread of fire and smoke.
- We have passive fire certificate Class A from Maharashtra Fire Service Department for manufacturing of fire rated doors and we can issue Form A after completion of the job for obtaining Fire NOC.

Fire Ratings

We are manufacturing 1 hr. and 2 hrs. fire rated doors in accordance with the criteria of BS 476: part 20 & 22 and IS 3614 part 2

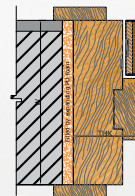
1 Hr. Fire Rated Door Frame Section Size

100mm x 48mm



56mm thk. Shutter

150mm x 60mm



50mmthk. Shutter

2 Hr. Fire Rated Door Frame Section Size

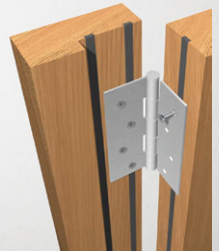
150mm x 72mm



110mm x 45mm



55mm thk. Shutter

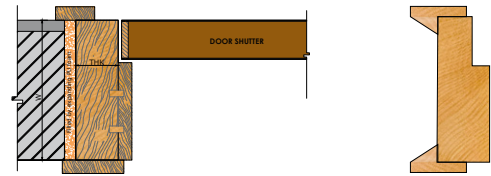


DOOR FRAMES & FRAME FINISHES

Door Frames

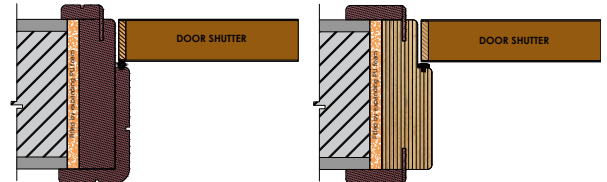
Hardwood door frame

Omfurn door frames are factory finished, made using best quality hardwoods which are kiln dried. The frames are available in Steam Beech, Red Meranti, Teak Wood and Basra Wood.



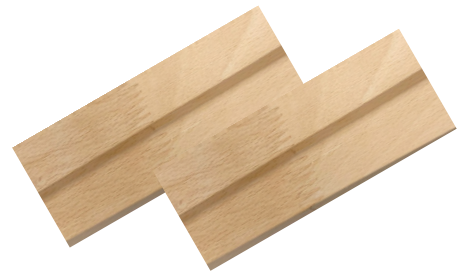
Engineered Wood door frame

Laminated Veneer Lumber and Exterior Grade MDF door frames provide higher strength and better surface finish.



Finger Jointed door frame

Finger joint is made by cutting interlocking profiles in two pieces of wood which are glued together under pressure. By using woods of smaller lengths, considerable wastage is reduced. Finger Jointed door frames provide better strength and stability.



Door Frame Finishes

PU Polish

Omfurn offers eco-friendly water-based PU Polish and Solvent based PU Polish with different colours in matt or gloss finishes. Entire coating is done on dust-free environment under positive pressure for superior results in our Venjakob line.



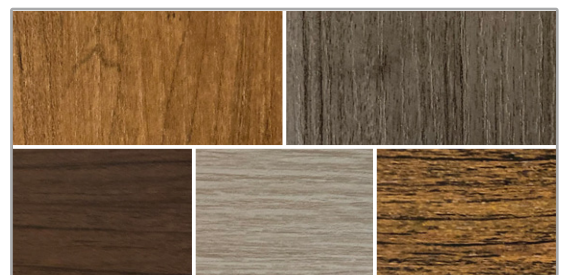
PU Paint

Omfurn provides wide varieties of colour finishes in Pigmented matt and Gloss Colours on engineered wood and solid rebate frames. Entire coating is done on dust-free environment under positive pressure for superior results in our Venjakob line.



Profile Wrapping

We use Renolit make (Germany) Olefin Foils for profile wrapping, we can provide wide range of options with natural wood finish which are abrasion resistant. Wrapping is provided on exterior grade MDF and LVL frames.



Ironmongery

Machining of lock slots, hinges slot, keyhole and handle hole are done automatically on CNC machines. This helps in maintaining quality and reducing installation time at site.



Our Esteemed Clients



OMFURN INDIA LIMITED

Maker of state - of - the art Moduler Furniture

ISO 9001:2015 | ISO 14001:2015 | ISO 45001:2018 Certified

Regd. Office: 109, Gundecha Industrial Complex, Akurli Road, Kandivali (E), Mumbai-400101, Maharashtra.

T: 022 4210 8900 | M: +91 9820520026 / +91 9833122847 | Email: omfurn@omfurnindia.com | www.omfurnindia.com